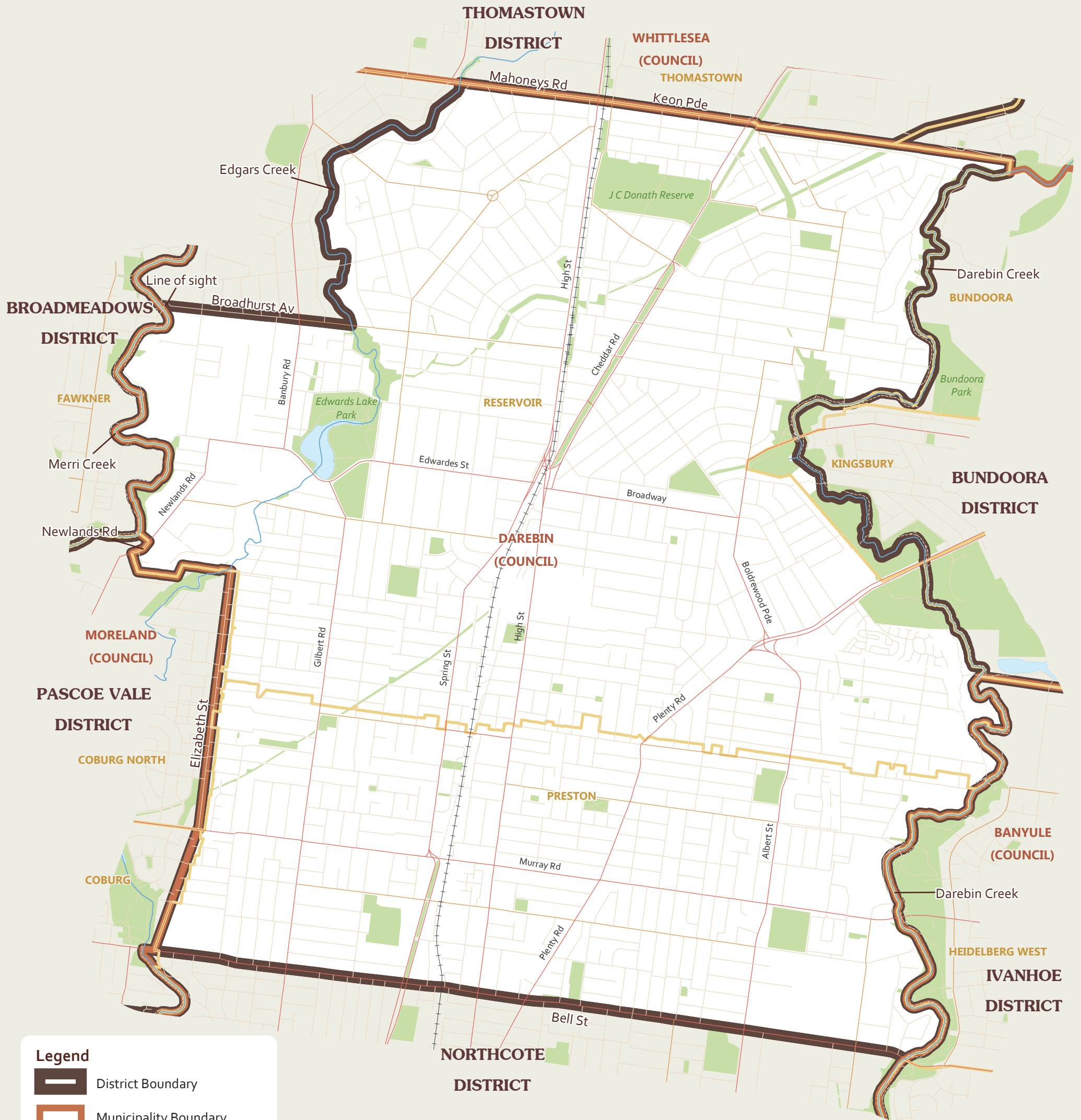


PRESTON

Area: 24.68 sq km



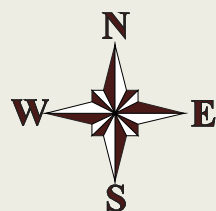
Legend

- District Boundary
- Municipality Boundary
- Locality Boundary

Map Symbols

- Freeway
- Main Road
- Collector Road
- Road
- Railway
- River/Creek
- Lake
- Parks

Data sets for alignment
Locality as at March, 2013
Property grid as at April, 2013



0 0.75 1.5
KILOMETRES



Map prepared by the Victorian Electoral Commission
Vicmap spatial data provided by Department of Environment and Primary Industries
Parks digital data used with the permission of Parks Victoria
Copyright © 2013 - State Government Victoria



Disclaimer: This content is provided for information purposes only. While every effort has been made to ensure accuracy and authenticity of the content, the Victorian Government does not accept any liability to any person for the information provided